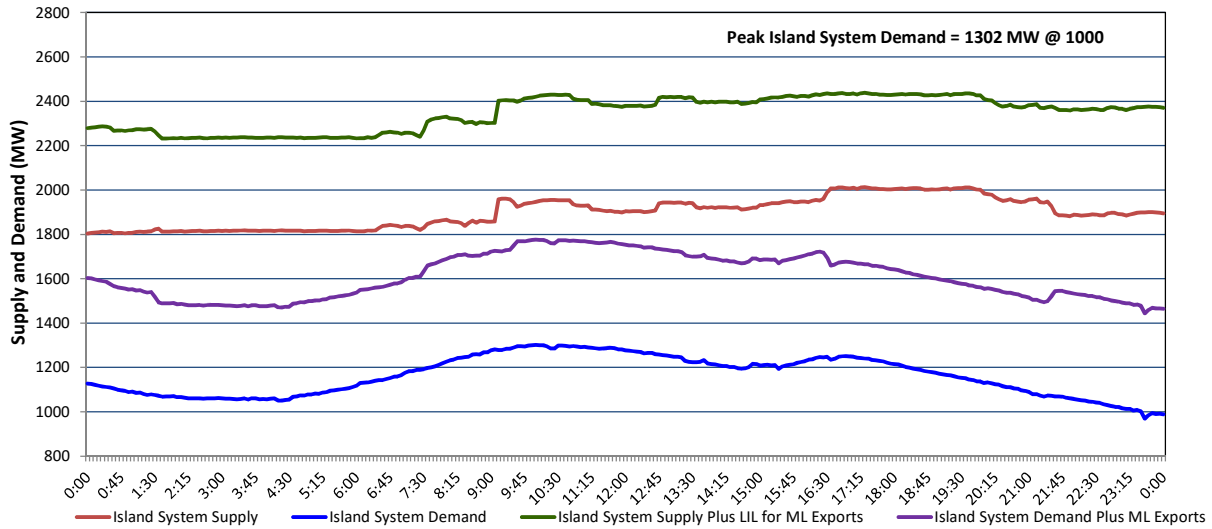


# Newfoundland Labrador Hydro (NLH) Supply and Demand Status Report Filed Monday, December 23, 2024

## Section 1 Island Interconnected System - Supply, Demand & Exports Actual 24 Hour System Performance For Saturday, December 21, 2024



### Island Supply Notes For December 21, 2024 <sup>1</sup>

- A** As of 0000 hours, October 20, 2024, Holyrood Unit 1 unavailable due to forced extension to planned outage (170 MW).  
**B** At 0908 hours, December 21, 2024, Holyrood Unit 3 available at full capacity (150 MW).

## Section 2 Island Interconnected System - Supply, Demand & Outlook

Sun, Dec 22, 2024	Island System Outlook <sup>2</sup>	Seven-Day Forecast	Island System Daily Peak Demand (MW)	
			Forecast <sup>8</sup>	Adjusted <sup>6</sup>
Island System Supply: <sup>4</sup>	1,947 MW	Sunday, December 22, 2024	1,375	1,295
NLH Island Generation: <sup>3,7</sup>	1,485 MW	Monday, December 23, 2024	1,445	1,365
NLH Island Power Purchases: <sup>5</sup>	135 MW	Tuesday, December 24, 2024	1,465	1,385
NP and CBPP Owned Generation:	220 MW	Wednesday, December 25, 2024	1,355	1,275
LIL/ML Net Imports to Island: <sup>9</sup>	107 MW	Thursday, December 26, 2024	1,265	1,185
		Friday, December 27, 2024	1,230	1,150
7-Day Island Peak Demand Forecast:	1,465 MW	Saturday, December 28, 2024	1,260	1,180

### Island Supply Notes For December 22, 2024

- C** At 0643 hours, December 22, 2024, Granite Canal Unit unavailable due to a forced outage (40 MW).

- Notes:
1. Generation outages for running and corrective maintenance are included. These are not unusual for power system operations. They generally do not impact customer supply. Hydro schedules outages to system equipment whenever possible to coincide with periods when customer demands are low and sufficient supply reserves are available. However, from time to time equipment outages are necessary and reserves may be impacted.
  2. As of 0800 Hours.
  3. Gross continuous unit output.
  4. Gross output from all Island sources (including Note 4).
  5. NLH Island Power Purchases include: ML Imports, Exploits Generation, Rattle Brook, Star Lake, Wind Generation and capacity assistance (when applicable).
  6. Adjusted for interruptible load and the impact of voltage reduction when applicable.
  7. Due to limitations inherent in the design of combustion turbines, the output of combustion turbines may be reduced in the event that ambient temperatures exceed the threshold required for full rated output. This threshold is dependent on the design of each turbine.
  8. Does not include ML Exports.
  9. LIL Import sunk in the Island System. Actual LIL flows will be restricted by various system conditions including, but not limited to, Island Load, ML Exports and Avalon Unit status.

## Section 3 Island Peak Demand and Exports Information Previous Day Actual Peak and Current Day Forecast Peak

Sat, Dec 21, 2024	Island Peak Demand <sup>10</sup>	10:00	1,302 MW
	Exports at Peak		474 MW
	LIL Net Imports to Island		2,477 MWh
Sun, Dec 22, 2024	Forecast Island Peak Demand		1,375 MW

- Notes: 10. Island Demand is supplied by NLH generation and purchases, LIL Imports plus generation owned and operated by Newfoundland Power and Corner Brook Pulp & Paper (Deer Lake Power, DLP).